

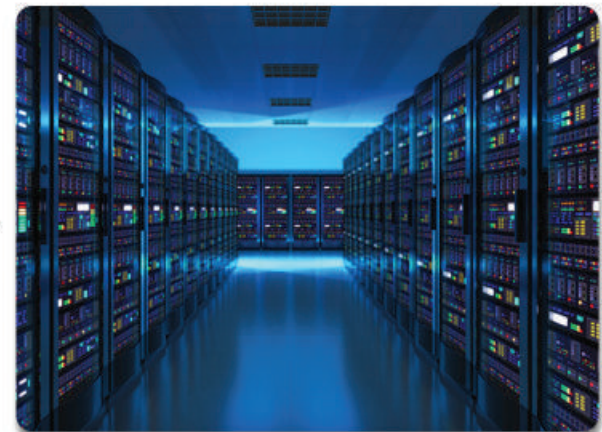
Case study 334

Engineering company seeks server cooling

Failure to control or monitor your server room's environment can have devastating implications for a company's continued operation. Large data centres generally contain an assortment of mechanical and electrical equipment which can cause crippling issues should they go offline due to breakdown. So when temperatures began to rise in southern England, one of the country's leading engineering consultancies took measures to ensure vital IT equipment remained functional during the subsequent heatwave.



At this juncture, Andrews Chiller Hire was contacted by a nationally-renowned facilities management company who were tasked with guaranteeing their client's premises were sufficiently protected. The initial discussion prompted a site survey, which was carried out by a regional technician and allowed us to propose a package befitting of the application.



Providing the correct volume of cooling duty was of paramount importance because of the existing equipment's susceptibility to warm conditions. It was therefore decided that a single 100kW fluid chiller unit would be stationed outside the building and connected to a number of air handlers deployed inside. A total of five air handlers were thus commissioned – two 15kW units and three 30kW models – affording our customer a flexible, tailored solution.



Following the hire's completion, the contractor declared that they were extremely pleased with our professional service which enabled a temperamental situation to be tackled safely. The speed with which we delivered and specified the temporary equipment was absolutely fundamental in keeping a large data room online at all times.

Nominal cooling duty 100 kW
Nominal heating duty 100 kW
Power supply 415 V 3 ph Run 60 A
Noise level (max) 58 dB @ 10 metres
Weight 1,560 kg
Dimension 3,090 x 1,330 x 2,775mm
Control Automatic programmer
Plug type Hard wired 5 core x 35mm²
Average power consumption 33 kW/hr
Generator size 75 kVA
Water connection 50 mm (2" Bauer)
Nominal water flow 5 l/s



ANDREWS
CHILLERS

HIRE SALES SERVICE INSTALL

0800 211 611

andrews-sykes.com