

Service and Maintenance

1. Daily Check fuel level and top up as needed and when you start the unit.
2. Daily Check vacuum pump oil level and top up if needed and when you start the unit.
3. Daily Check Engine oil level and top up if needed and when you start the unit. (Oil required Multigrade 15W-40)
4. Check daily Tyres are correctly inflated, check sidewalls for damage, tread for wear, wheel nuts are secure and lights are operational.



CAUTION!

- When checking or topping up fuel or oil please make sure the engine is off and not running. Use an appropriate fuel dispenser. Do not smoke!
- Use only clean, fresh, low sulphur commercial-grade diesel fuel.
- Do not overfill fuel tank, leave room for fuel to expand. Clean up any spillage that occurs during refuelling.
- Pumps must be drained after use to avoid frost damage
- Repairs must only be carried out by a competent person, if in any doubt please contact your local Andrews Sykes Depot.
- Ensure the trailer is within the tow vehicles manufacturers weight range, the driver has licence category for the trailer. Tachograph regulations and duty hours to be observed if applicable.



CAUTION!

General Safety

- Always assess the risk before use.
- This equipment should only be used by a competent person.
- Follow operation and maintenance instructions.
- Ensure safe and correct positioning of equipment prior to use.
- Moving parts are guarded to protect you or others. Guards removed for maintenance must be replaced before starting the pump.
- Never operate this equipment if you are ill or under the influence of alcohol or drugs.
- Ensure that the equipment is inspected & serviced at appropriate intervals.
- Never insert your hand or any other object into the pump casing/inlets unless you are sure the pump has been switched off, preferably lock it off and retain key or remove and keep starter key.
- If pumps and or hoses are to be used for contaminated, noxious or corrosive liquids then it is the duty of the hirer to notify Andrews Sykes of the specific nature of the material. After use both pumps and or hoses should be flushed with clean water.
- Wear appropriate PPE for the task

SYKES PUMPS

Operating, Maintenance and Safety Instruction leaflet

For Further Information Visit www.sykes-pumps.com or
contact your local Andrews Sykes Depot on 0800 211611

Rapid Response Pump

Important

It is the user's responsibility to ensure that the information contained within this leaflet is read and fully understood before any attempt is made to use the equipment



General Operation

This pumpset is a fully automatic self-prime unit, it requires no additional priming fluid. The pump will prime automatically on start-up and from intermittent periods of dry running where the intake has been exposed to atmosphere.



DANGER!

The pump must not be used in an explosive or flammable environment or for pumping flammable liquids. Never place flammable items around the unit.



CAUTION!

Siting and operating the pumpset

- The pump should be placed on a level area of ground and the wheels chocked to prevent movement in use. Please lower all propstands and secure.
- Never lift or tow with the suction or delivery hoses attached. The increased weight of these items may cause chassis failure.
- Never operate an engine in a confined space, ensure adequate ventilation for exhaust fumes.
- Be aware the exhaust silencer, vacuum pump and associated pipework get hot during use, position the pump so these do not cause a hazard to health or property
- When operating, these pumps will produce noise levels up to 81 dBA @ 1m Please use ear defenders in the direct vicinity suitable for the level shown. Please also be aware of the noise hazard to others.
- Check the area where the liquid will be discharged, make sure that you will not be creating a hazard for persons or for the environment.
- Position the hoses to avoid unnecessary stress. Sharp bends should be eliminated and protective measures taken where hoses come into contact with abrasive surfaces.
- Always fit an appropriate strainer to the suction hose and that once in situ is fully immersed in the medium to be pumped.
- Collapsible type hoses must not be used on the suction side of the pump.
- On all Hoses and fittings make sure where "o" rings are fitted that they are in place and in good condition. Air leaks will affect the performance of the pump.
- Before starting the pumpset please wind the surge control fully in and only adjust once the pumpset is running to suit operating conditions.

Starting

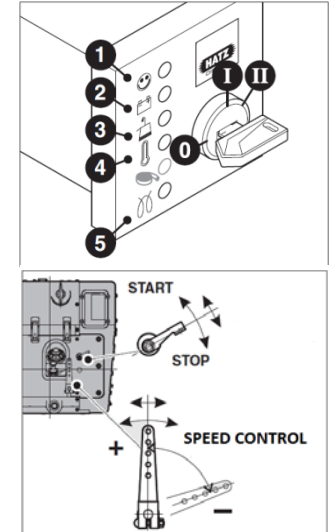
Read the engine manufacturers instructions in the pump manual or proceed as follows:



CAUTION!

- Before attempting to start the engine please check the engine oil level and top up if required.
- Please check that there is adequate fuel in the fuel tank, top up if required.

1. The key should be in the zero position with all lights out on the keyswitch
2. Make sure the start/stop lever is in the start position.
3. Turn the speed control lever to the maximum speed position.
4. Turn the key to the 1st position, warning lights should now be on.
5. Now turn the key to the 2nd position (starting position). The engine should now start. Do not actuate the starter switch for more than 20 seconds at a time. If engine fails to start wait 1 minute before repeating attempt.
6. The key should be released once the engine is running, the key should return to the 1st position.
7. The appropriate speed should then be set by the speed control lever.



Stopping

1. To Stop please turn the Speed control lever to its slowest position, If engine does not stop then move the Start/Stop Lever to the stop position. Once the engine has stopped please move the key switch to the zero position.
Note: Engines with an automatic electrical shutdown system can also be switched off by turning the key back to the zero position.
2. When Appropriate please drain the pumpset. Always drain before towing on the highway.



CAUTION!

Towing

- Ensure there is positive locking onto tow vehicle ball and wear indicator is acceptable. Secure electrical plug and check lights are operational.