

# 22kW Electric Boiler with HEX



## Operating Instructions & Safety Guide



0800 211 611  
andrews-sykes.com

### General Safety

- This equipment should only be used by a competent person who has read and understood these instructions.
- Check condition of equipment before use. If unit is showing any signs of damage contact your supplier immediately.
- Never operate this equipment if you are ill, feeling tired or under the influence of alcohol or drugs.
- Keep all vents and grills clear of obstructions.
- Keep children and animals away from electric powered equipment. Never leave them alone when the unit is in use.
- Make sure equipment is switched off and unplugged after use.

### Electrical Safety

- This unit operates on a 415 volt 5pin 32amp power supply
- Always inspect plugs and power cables for damage before plugging into power supply.
- DO NOT USE IF ANY DAMAGE IS FOUND.
- Ensure cables are installed to prevent hazards.
- If an extension lead is used, ensure it is of the correct standard and fully uncoiled before use.
- Cables must not be laid in wet or damp areas.
- Do not move equipment while operating.
- Do not pull equipment by the power lead.

### Getting started and operation

Position equipment on level ground.

Position away from any possible flammable materials.

Do not use within any zoned or hazardous areas.

Keep at least 1 meter of clearance around the Boiler and don't restrict the air flow around the Boiler.

The temperature control setting will have to be set according to the actual application the boiler is being used for.

DHW applications cannot operate above 58 degrees Celsius.

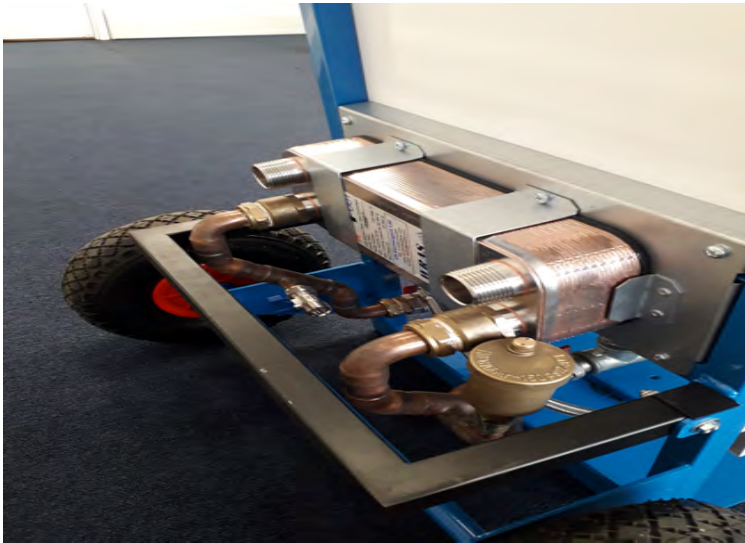
### Fig 1:

The power requirement for the 22kW boiler with HEX is 5 pin 32amp 415 volt  
240 volt blue socket 16amp  
These auxiliary Sockets are used for secondary circulating pumps for underfloor heating applications



**Fig 1 : Phase rotation does NOT need to be checked with this 415v appliance**

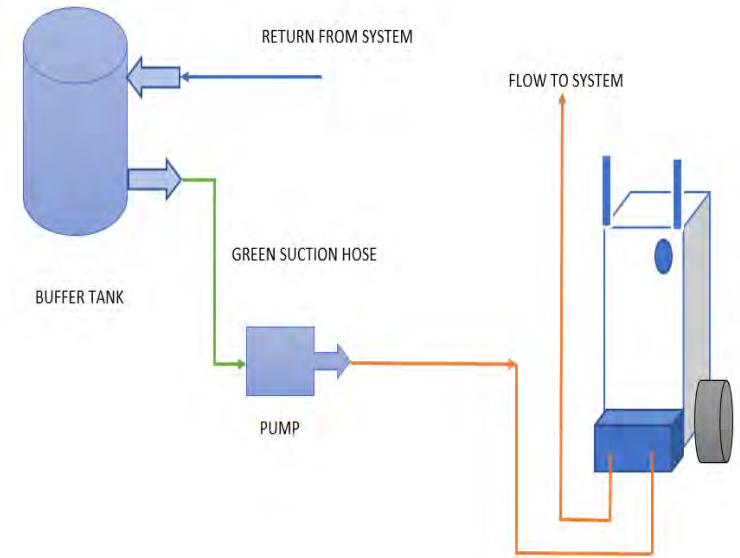
**Fig 2 :**  
 Bolt on HEX positioned at low level at the back of the unit. protected with a frame and positioned between the wheels. This unit would be installed the same as a standard 22kW unit just the HEX is now fixed at all times.



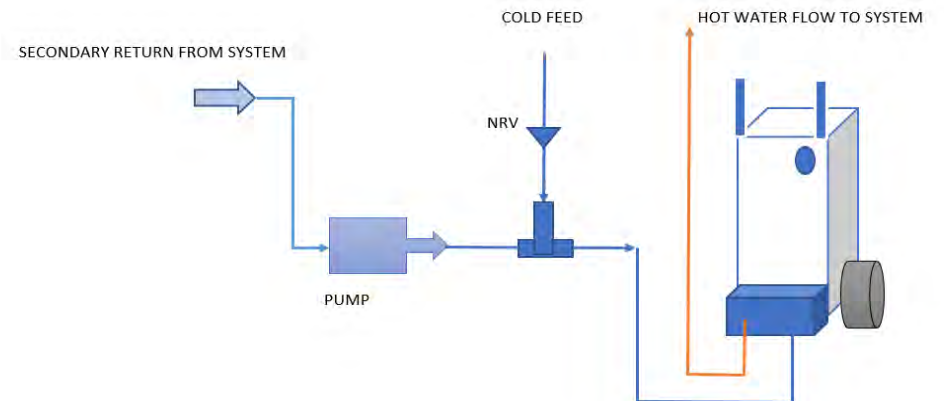
**Fig 3:**  
 you can still use the flow and return 1" connections on the front of the boiler for applications that doesn't need a heat exchanger



**Fig 4:**  
 Schematic layout of an underfloor heating layout.



**Fig 6 :**  
 Schematic layout of a DHW application using a 22kW Boiler



**Fig 5 : Control panel**

Please see controller instructions on the sticker above the controller. This will tell you how to set the desired temperature



Switch position 1 = 11kW  
 Switch position 2 = 22kW  
 Water pressure on the gauge must be 1.5 Bar