

# 1250kW Packaged Boiler



## Operating Instructions & Safety Guide



0800 211 611  
andrews-sykes.com

### General Safety

- This equipment should only be used by a competent person who has read and understood these instructions.
- Check condition of equipment before use. If unit is showing any signs of damage contact your supplier immediately.
- Never operate this equipment if you are ill, feeling tired or under the influence of alcohol or drugs.
- Keep all vents and grills clear of obstructions.
- Keep children and animals away from electric powered equipment. Never leave them alone when the unit is in use.
- Make sure equipment is switched off and unplugged after use.

### Electrical Safety

- This unit operates on a 415 volt 5pin 32amp power supply
- Always inspect plugs and sockets before use and make sure there are no signs of damage
- DO NOT USE IF ANY DAMAGE IS FOUND.
- Ensure cables are installed to prevent hazards.
- If an extension lead is used, ensure it is of the correct standard and fully uncoiled before use.
- Cables must not be laid in wet or damp areas.
- Do not move equipment while operating.
- Make sure the boiler flu is positioned 1.5m away from the nearest building

### Getting started and operation

Position equipment on level ground.

Position away from any possible flammable materials.

Do not use within any zoned or hazardous areas.

Keep at least 1 meter of clearance around the Boiler and don't restrict the air flow around the Boiler.

Always make sure the fuel tank is positioned on level ground and is positioned within 1.5 meters of the boiler location to make sure the fuel line can reach and connect.

The temperature control setting will have to be set according to the actual application the boiler is being used for.

DHW applications will require an additional plate heat exchanger to be mounted externally to the temporary boiler

5 pin 32amp 415 volt Appliance inlet plug found on the 1250kW Boiler



Fig 1 : 415 volt  
Appliance inlet plug

Fig 2 :  
The 1250kW Packaged Boiler can be supplied to operate on Gas oil only 6,000 liter and 10,000 liter Gas oil fuel tanks available. the boiler has only one fuel line for the fuel pick up and must be connected to the flow connection on the tank.



Fig 4:  
Pressure and temperature gauge for boiler monitoring. manual reset pressure switches



Fig 6 :  
Example of the switch gear control panel



Fig 5 :  
Gas oil 2 stage burner.  
Twin tiger loop filter system

Fig 3:  
The boiler control panel for boiler temperature control  
The 1250kW boiler doesn't have a plate heat exchanger so no primary or secondary sides

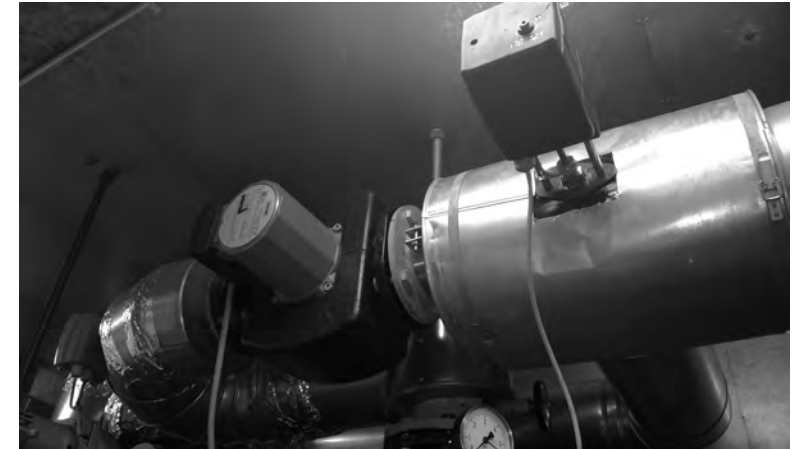


Fig 7 :  
Shunt pump with 3 way temperature mixing vale