

100kW Rapid Response Boiler



Operating Instructions & Safety Guide



0800 211 611
andrews-sykes.com

General Safety

- This equipment should only be used by a competent person who has read and understood these instructions.
- Check condition of equipment before use. If unit is showing any signs of damage contact your supplier immediately.
- Never operate this equipment if you are ill, feeling tired or under the influence of alcohol or drugs.
- Keep all vents and grills clear of obstructions.
- Keep children and animals away from electric powered equipment. Never leave them alone when the unit is in use.
- Make sure equipment is switched off and unplugged after use.

Electrical Safety

- This unit operates on a 240 volt 3pin 16amp power supply
- Always inspect plugs and sockets before use and make sure there are no signs of damage
- DO NOT USE IF ANY DAMAGE IS FOUND.
- Ensure cables are installed to prevent hazards.
- If an extension lead is used, ensure it is of the correct standard and fully uncoiled before use.
- Cables must not be laid in wet or damp areas.
- Do not move equipment while operating.
- Make sure the boiler flu is positioned 1.5m away from the nearest building

Getting started and operation

Position equipment on level ground.

Position away from any possible flammable materials.

Do not use within any zoned or hazardous areas.

Keep at least 1 meter of clearance around the Boiler and don't restrict the air flow around the Boiler.

Always make sure the boiler is positioned on level ground and is positioned 1.5 meters away from the nearest building

if the boiler is connected to an external fuel tank please ensure this is positioned also on level ground

The temperature control setting will have to be set according to the actual application temperature the boiler is being used for. This boiler does not have a 3 way mixing valve

3 pin 16amp 240 volt Appliance inlet plug found on the 100kW Boiler



Fig 1 : 240 volt Appliance inlet plug Cable entry is through the black round port hole below the control panel

Fig 2 :

The 100kW Rapid Response Boiler can be run on its own internal 98 liter fuel tank or can be easily connected to an external fuel tank
1,000 liter and 3,000 liter Gas oil fuel tanks available. the boiler has only one fuel line for the fuel pick up and must be connected to the flow connection on the tank.



Fig 4:

Thermostat used to control Heating applications.



- A. Mains power isolator
- B. 16amp 1P Power inlet
- C. Boiler low pressure light
- D. Primary pump switch
- E. Secondary pump switch

Fig 7 : Control panel



Fig 3:
The 100kW Rapid Response Boiler has a heating only plate heat exchanger. The primary side of the heat exchanger will need to be filled with water to 1.5 bar

Fig 5 :
2 x 1" storz connections for flow and return heating connections
Fuel connection for external tank

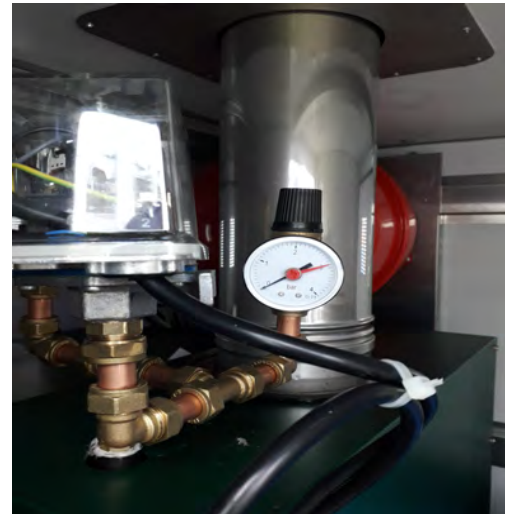


Fig 8 :

Low pressure switch for the primary side of the boiler. primary needs to be pressurized to 1.5 bar before the boiler will run. low pressure light on panel will be on until the correct pressure is present



Fig 6: Internal fuel switcher valve to switch from internal to external fuel tank



Fig 9 :
Flow and return connections inside of the boiler. water filter is on the return connection. Make sure the secondary side of the boiler is filled with water before switching on the secondary pump